

Covenanter International Holiday Conference

Information Sheet:

For All Conferees:

Arrival: Saturday, 17th July 2010 from 3pm
Registration: 3pm – 5pm in Mansion House Foyer
First Meal: 6pm in Basement Dining Room
Evening Programme: 7.30pm in Sports Hall for all ages
Last Meal: Breakfast on Saturday
Departure: Saturday, 24th July 2010 before 10am
Gartmore House Complex operates a non-smoking policy
Pets are not allowed at Gartmore House (guide dogs excepted)

Facilities:

Gartmore House public areas are available to all Conferees
Covenanter Bookstall on site for the week
Numerous lounge areas for fellowship
Sports Hall, Games Room, Football pitches
No baby cots provided, but several high-chairs available
Laundry service provided for a charge

Mansion House:

Full-board
Towels & Bed-linens will be provided
Limited toiletries in ensuite bathrooms
Tea/Coffee facilities in each room
Lift access to all floors
Rooms will be refreshed each day (not linens/towels)

Hotel:

Full-board (breakfast at hotel—all other meals at Gartmore House)
Towels & Bed-linens will be provided
Ensuite bathrooms
Tea/Coffee facilities in each room
Located one mile from Gartmore House (20 min walk on path)
Transport provided if needed

Cottage:

Full-board
Towels & bed-linens will be provided
Most rooms with ensuite bathrooms
Furnished kitchen for Tea/Coffee

Mews:

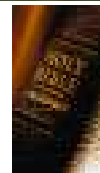
Full-board
Towels & bed-linens will be provided
Shared bathroom between six guests

Dorms:

Full-board
All rooms ensuite
Towels & bed-linens will be provided
Beds will need to be made-up upon arrival

Campsite:

Non-serviced sites – bring your own power supply!
Small kitchen in Activity Centre with fridge/freezer/hot water
Showers off sports hall and in basement of Mansion House
Meals can be purchased in Mansion House –forms out Spring 2010



Covenanter International Holiday Conference 2010

Travel Options

Gartmore House is located approximately 30 miles north of Glasgow on the A81 to Aberfoyle.



There are a variety of ways to travel to the conference. These fall into two categories: those with a car and those without.

Options with a Car

There are 3 crossings from Northern Ireland to Scotland during the month of July.

- Belfast - Stranraer with Stena line
- Larne - Cairnryan with P&O
- Larne - Troon with P&O

Price for 2010 are now available and will vary depending on the day/time/boat selected.

There are a number of ways of obtaining reduced prices for the ferry crossing. The best we have seen to date is offered by Tesco clubcard. You can convert your clubcard vouchers to travel vouchers to get a reduction on the ferry cost. A £1 clubcard voucher is converted to £4 of travel vouchers. Thus if you have saved £50 of clubcard vouchers you can receive £200 of travel vouchers to reduce the price you pay for the ferry crossing. To use this offer you obviously need to shop at Tesco's and save your clubcard vouchers. To convert the clubcard vouchers, that are posted to you on a quarterly basis, you have to enter the code on the voucher to the Tesco's clubcard website. www.tesco.com/clubcard/deals/ You then select travel and follow the on screen instructions.

Directions

From Glasgow - On the M8 take junction 16 for A81 to Aberfoyle. This will take you out of the City centre via Milngavie and Strathblane towards Aberfoyle. Continue past the sign for Gartmore village, Gartmore house is on the left.

From Stirling - On the M9 take junction 10 for A84 towards Callander. After the Safari park, take A873 to Aberfoyle. At the Rob Roy Motel roundabout turn left onto the A81 towards Glasgow. Continue past the sign for Gartmore village, Gartmore House is on the right.

For SatNav - Postcode for Gartmore House: FK8 3RS

Options without a Car

There are 4 main ways to travel to the conference if you do not have or want to take you car.

- Arrange to get a lift with someone who is taking a car.
- Fly to Glasgow international airport or Glasgow Prestwick airport
- Take Stena line's Rail and Sail link to Glasgow
- Take Cityline's sail and bus link to Glasgow

Flights

- Easyjet fly from Belfast international airport to Glasgow international airport.
- Flybe fly from Belfast international airport to Glasgow international airport.

- Ryanair fly from Belfast city airport to Glasgow Prestwick airport.
- Bus transfers from Glasgow international airport to Glasgow Buchanan street station are available every 10 mins with the Glasgow Flyer Airport Express at a cost of £4.60 single.
- Glasgow Prestwick Airport is served by Stagecoach Western Express Service X77 service to/from Glasgow Buchanan Street Station, this is a direct service which stops outside the airport concourse.

Rail & Sail or Sail & Bus

- Stena line has a sail & rail link to Glasgow Buchanan street station. There are currently 2 travel times available per day and costs approximately £46 per person return. www.stenaline.co.uk/ferry/rail-and-sail/
- Citylink have a bus and sail link to Glasgow Buchanan street station. There are also 2 travel times available per day and cost approximately £38 per person return. www.citylink.co.uk

Travel from Glasgow Buchanan Street station

The conference committee will be arranging a bus from Glasgow's Buchanan Street Station to Gartmore House on both 17th and 24th July 2010. The return price will be dependent on the number of conferencees using the bus, but the approximate price should be no more than £20 return. Times are as follows:

- Saturday 17th July: Depart Glasgow Buchanan Street Station at 3.30pm
Arrive Gartmore House approximately 4.30pm
- Saturday 24th July: Depart Gartmore House at 9.30am
Arrive Glasgow Buchanan Street Station approximately 10.30am.

What is there to do around Gartmore House?

A Scouting Trip to Gartmore House and the Trossachs



For as long as I can remember the International conference has been held at Termonfeckin, just north of Drogheda. But this year, for the first time, the Covenanter International Holiday Conference is going to be held at Gartmore House, Scotland.

If you are trying to plan for something it is always easier if you know where you are going. Thus for my holiday last year I decided to go to Scotland and specifically to Scotland's first National Park - 'The Loch Lomond & Trossachs

National Park' where Gartmore House is located.

I would like to give you a flavour of what the Covenanter International Holiday Conference 2010 will be like, what activities will be available in the surrounding area, and what you can do during the week or later if you decide to stay for longer in the Trossachs.

Firstly: The Gartmore House Complex. Built in 1793, Gartmore House is a beautifully restored historic building with views looking east towards Stirling and the lowlands of Scotland. For those looking for culture, Robert Burns is meant to have written and entertained in the lounge!! Apart from the Mansion House, there is the Activity Centre which houses the Dorms and Mews, and a Sports Hall. As Gartmore House is set in 75 acres of extensive grounds, one can also find ample space to walk, explore, or play games.

Just north of Gartmore House is Aberfoyle, a lovely traditional village. Available here is an 18-hole golf course, and the National Wool Centre, which offers free sheep dog shows every hour. One can also shop in the small boutiques or pop into the Co-op for groceries (something the campers will want to note!). For those wanting a bit more of an adrenalin rush, the UK's longest zip wire is located in Aberfoyle. And, if one high wire isn't sufficient, 'Go Ape' also has 20 other high wire courses to challenge your fear of heights!

Loch Katrine is 10 miles north of Gartmore House. This Loch was made famous by the poet Sir Walter Scott and his poem 'The Lady of the Lake'. There are a number of ways to discover the natural beauty of Loch Katrine. For the more energetic there is a 1.5 hrs climb of Ben A'an, or the option to hire a bike and cycle round the Loch. For those wanting someone else to take the strain, then a one-hour cruise on a steamer boat is just the ticket!

Callander is 10 miles northeast of Gartmore House. It is twice the size of Aberfoyle but is a similarly beautiful village. In Callander you can visit the Rob Roy centre, rediscover your childhood with the Hamilton Toy museum, work off your lunch with a 30 mins hike to two different waterfalls, or relax in the leisure centre and swimming pool. Just outside Callander on the road to Stirling is the Blair Drummond Safari and Adventure Park as well as the Monster Maize Maze -- an excellent opportunity to get completely lost!

Stirling is 25 miles east of Gartmore House. Stirling Castle is certainly worth a visit. Included in the entrance fee is the tour of Argyll's Lodging, a superb example of a 17th century townhouse -- owned by a prominent Covenanter! Also in Stirling is the Wallace National Monument. But be warned, there are 246 spiral stone steps up to the top of the monument. The views are worth the hair-raising climb up the steps but then you have to make your way down again!

Loch Lomond is 20 miles south of Gartmore House. The Loch can be best explored from the Balloch Country Park. Here you can walk along the shores of Loch Lomond, visit Balloch Castle, or enjoy the children's play area. 'Loch Lomond Shores' offers boat trips on the Loch and bike hire. The Loch Lomond aquarium, as well as many quaint boutiques and coffee shops, allow numerous opportunities to relax beside the famous Loch.

Edinburgh and Glasgow are both about an hour from Gartmore House. Edinburgh offers the opportunity to spend an afternoon steeped in Covenanter History, whilst Glasgow boasts some of Scotland's finest shopping centres.

Hopefully this article will have given you a taste of some of the extensive attractions that are available off-site around Gartmore House. Other activities will be happening on-site at Gartmore House, and there will be many opportunities, throughout the week, to share in activities and fellowship with God's people from across the globe.

William McCollum
Lisburn RPC

PS An Optional, Independently-Organised, Scottish Covenantering Tour is available the week before the conference.

